

Assembly of the RR105 log lift with hydraulic infeed.

- 1) Open box and make sure all components are have arrived.



1 - Main Frame	1 - Leg Section
1 - Log Lift	1 - Control with Hoses
1 - Steel Roller	1 - Drive Roller Mounting Bracket
1 - Hydraulic Ram	2 - Brackets

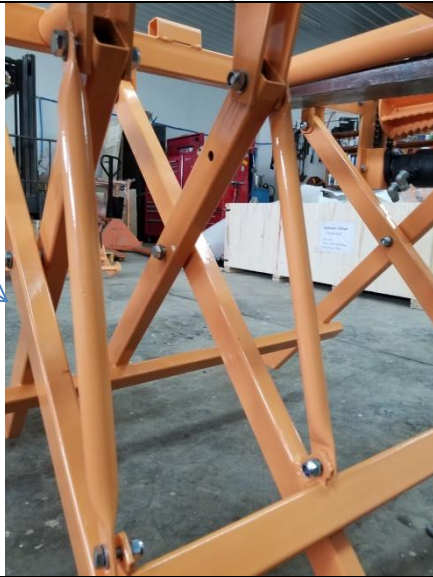
You will need either 2 people or a way of lifting the main frame section.

Set the Leg Section up.



RR105 Log Lifter

Insert the 2 support brackets into place. You will see the 2 tabs to attach to.



Another view of the support brackets in place



Ensure the wide spacers are in place so that the metal is not rubbing on metal.



RR105 Log Lifter

Insert the Ram into location.



Assembled unit should look like this



Hydraulic Control unit and hoses

Mount the control bracket to the hydraulic controls. Mount the controls to the processor



Connect the hoses according to the tags on the hoses..

The Hydraulic feed hose for the controller is connected to the exit conveyor on the hydraulic oil return side, disconnect the return line from fitting on the conveyor and connect the feed line for the valve to this fitting. Then the return line from the control valve returns to where the conveyor return line was returning to at the return tee.



RR105 Log Lifter

Connect the hoses from the control unit to the hydraulic infeed.

The hoses closest to the operator drive the wheel. The hoses in the middle of the assembly drive the RAM.

