



RR 610 Multi Dump Trailer Owner's Manual





Unpack everything and sort the nuts and bolts and other parts.





Take the frame out of the box.

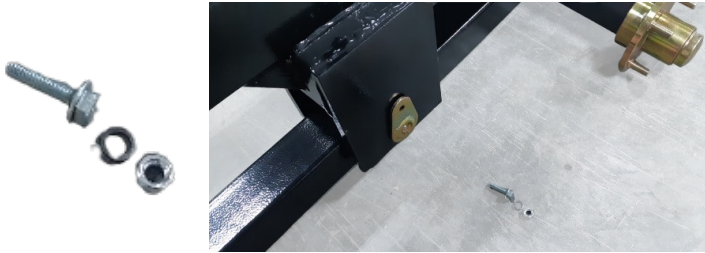


Connect both walking beam axles to the axle frame.





Secure the pin with the screw.

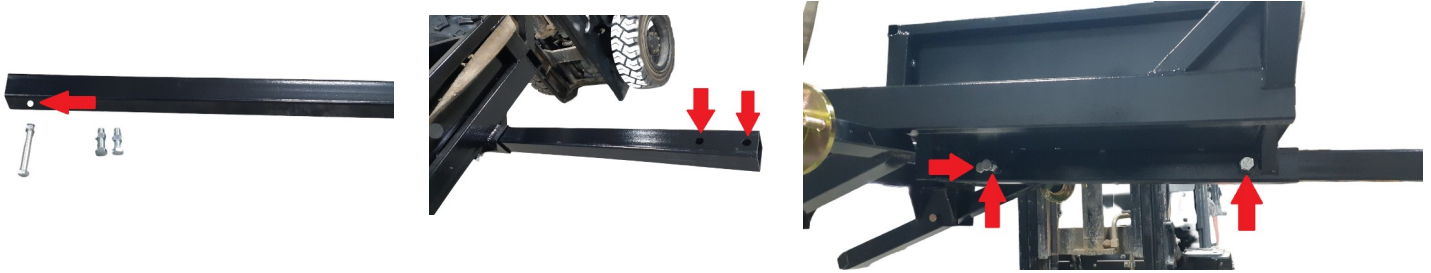


A cotter pin must be installed on the back of the pin.





Install the draw bar. The side with the 1 hole goes into the frame. One screw goes through the draw bar and two bolts clamp onto the bar. The 2 holes at the front have different sizes. The larger ones must face upward.



Install the wheels.



Install the toolbox. Keep it 8 inches away from the frame.

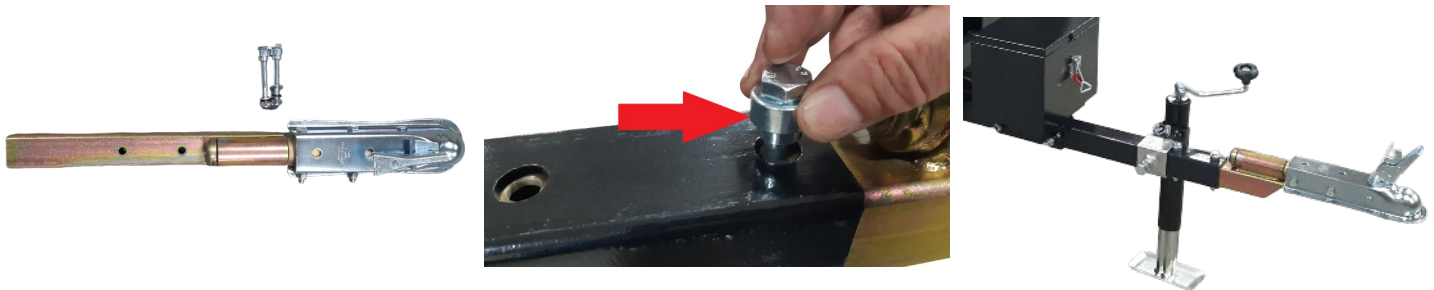




Mount the front stand on the draw bar.

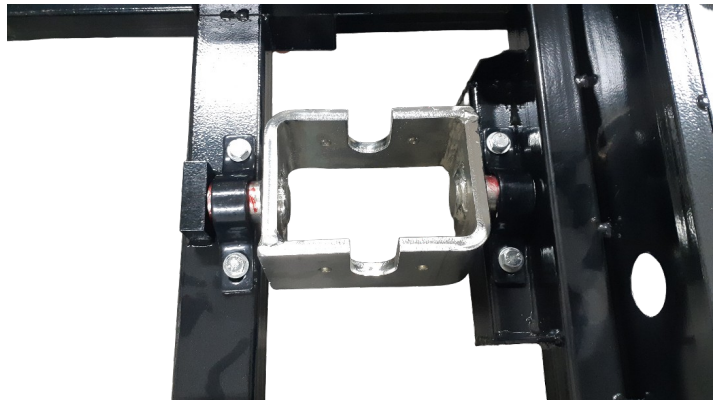
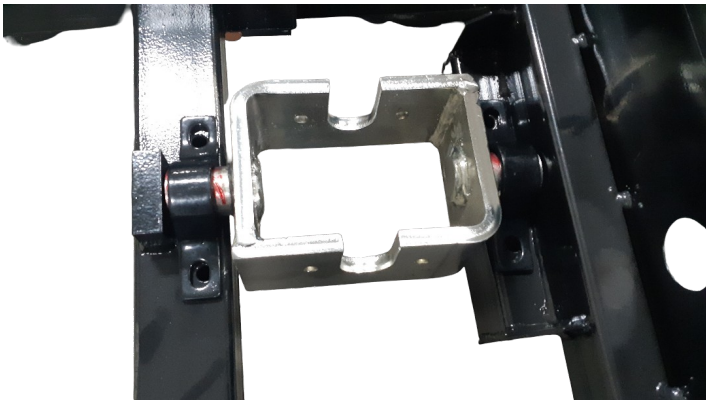
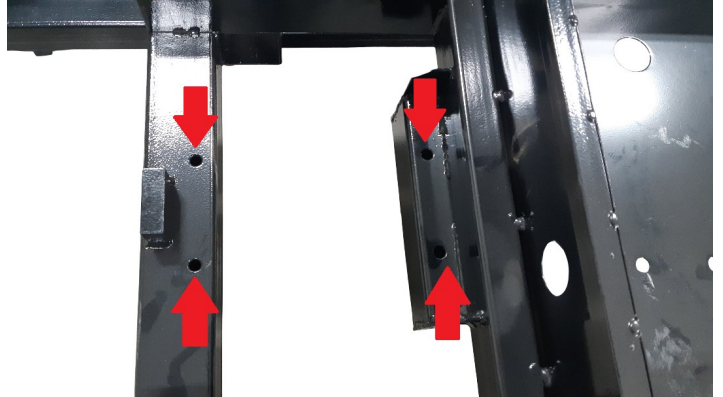
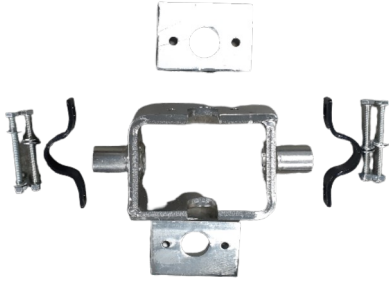


Attach the trailer hitch adapter to the draw bar. With the sleeves facing up.



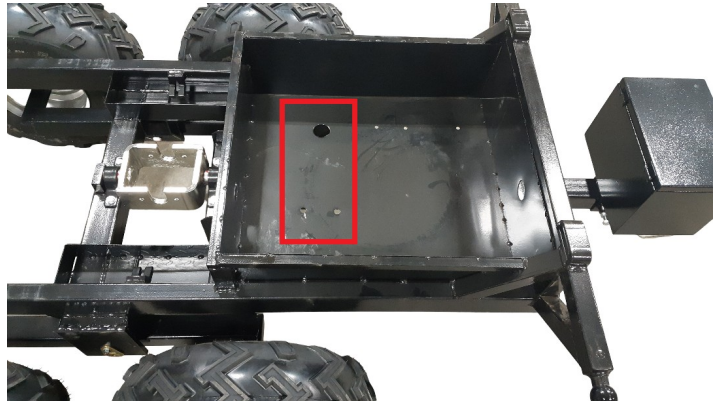


Find the swivel adapter mount for the cylinder. Installed at the marked location. Lubricate the pins.



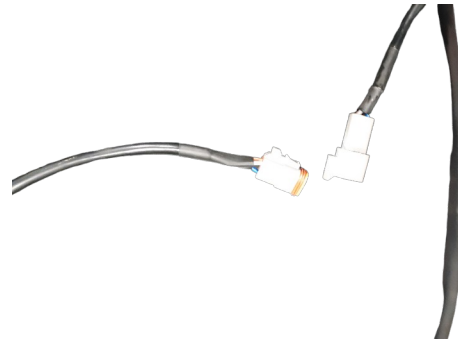
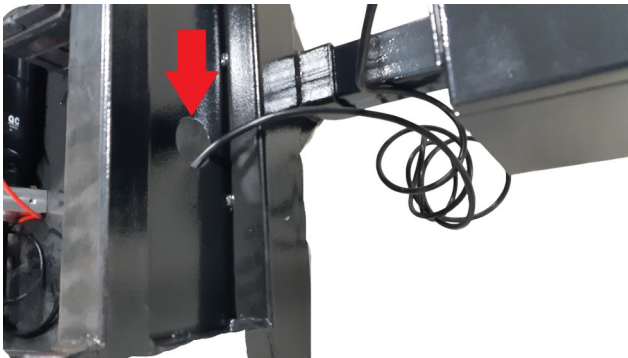
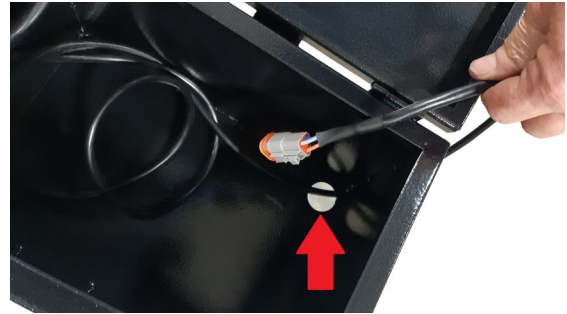


The hydraulic pump is installed next.

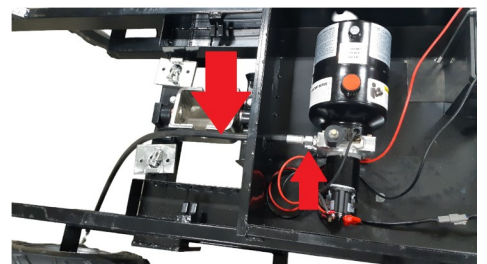
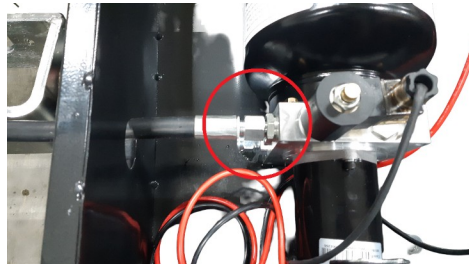




Feed the remote control cable through the hole in the toolbox from the inside to the outside, then through the opening in the frame, and connect the plug to the hydraulic pump cable.



Feed the hydraulic hose through the other hole in the frame and connect it to the pump.





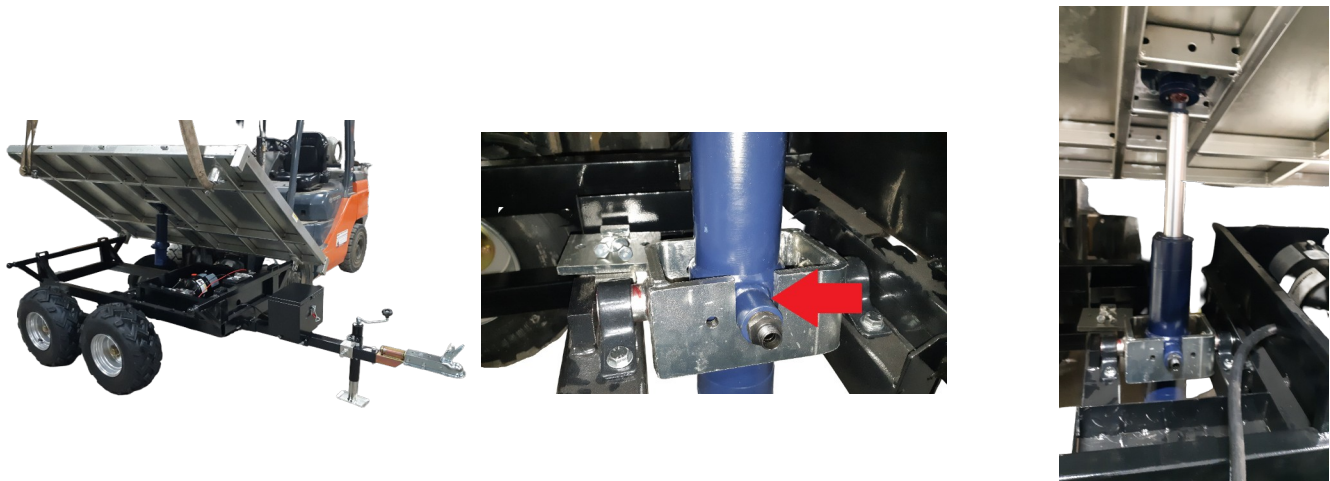
The hydraulic cylinder is bolted to the floor of the trailer bed. Lubricate the joint first.



Remove the base plate from the packaging and move it close to these two ball joints.



Attach the ball joints to the base plate and slowly lower the base plate. Next, insert the cylinder attached to the base plate into the cylinder mount on the frame. First, apply some grease to the pins of the hydraulic cylinder.

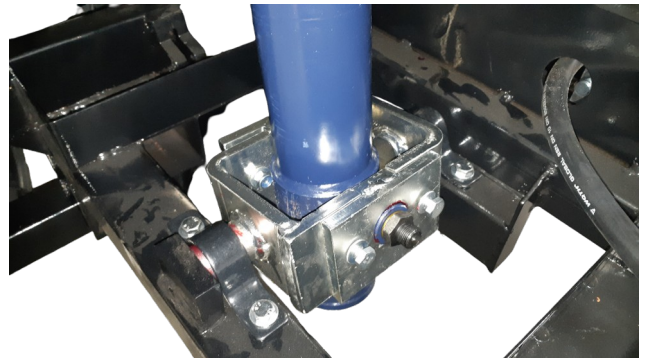
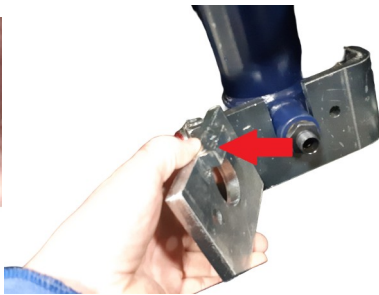
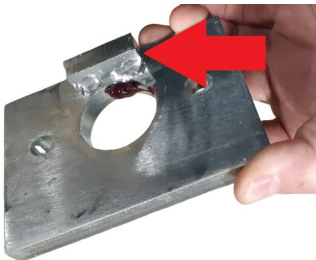




Install the locking pin in both joints. The chain is secured to the frame with a screw.

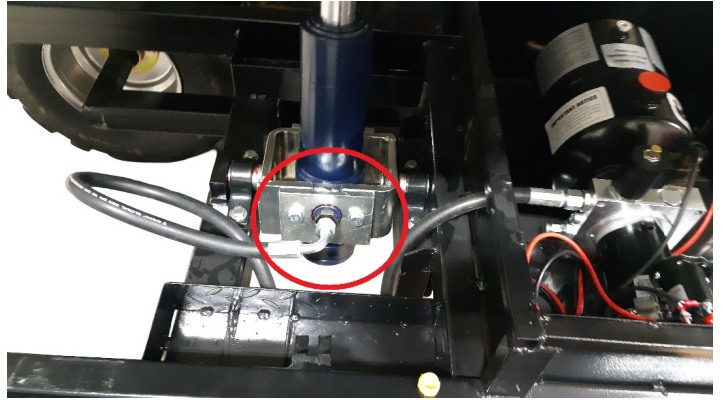
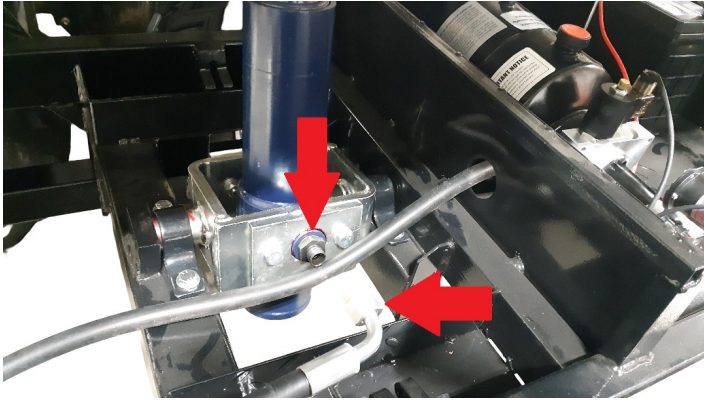
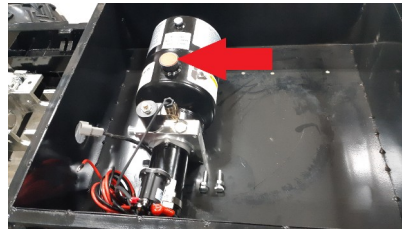


Next, attach the safety plates with screws. The welded rectangle facing upward.





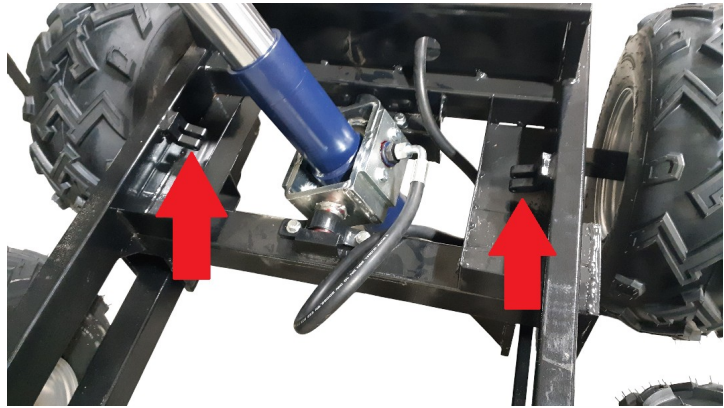
Fill the hydraulic pump reservoir with 4 liters of AW hydraulic oil. Install the hydraulic hose on the cylinder.



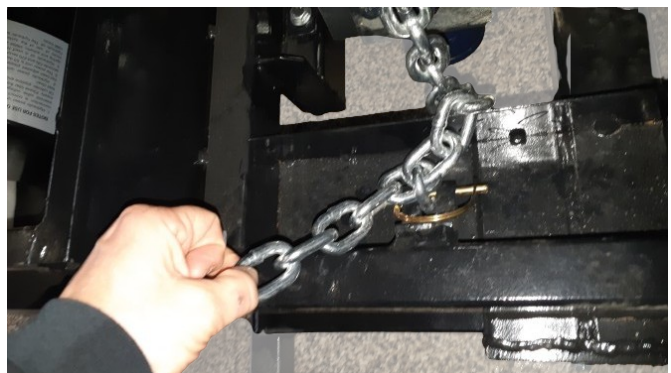
Install the two chains that limit the cylinder's extension and thus the angle of tilt. Secure the chains at the top with screws and at the bottom at the frame with safety pins. Install them so that the bottom end of the chain is secured at the 6th link.



range-road



Now carefully extend the cylinder. Do this slowly as the chain tightens. Check the locking pin on the ball joints. If the cylinder is extended too far—that is, if the chain is too long—the locking pin will hit the frame and may bend. This must be avoided at all costs. If the pin touches the frame when the chain is taut, lower the base plate and shorten the chain by one link at the bottom of the bracket.

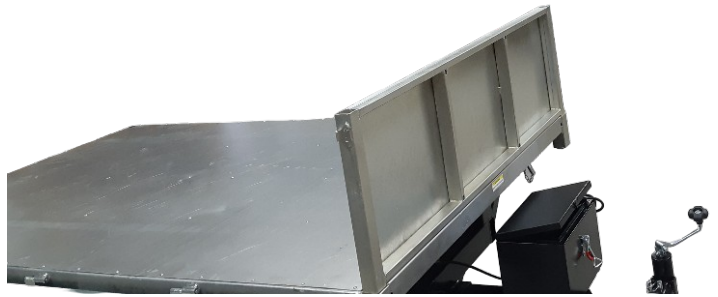




Install the remaining two retaining pins for the other 2 ball joints using the screws on the frame.



Install the front panel. To do this, slide the square tube into the frame.





Next, the two side panels. Installed with the hinges.

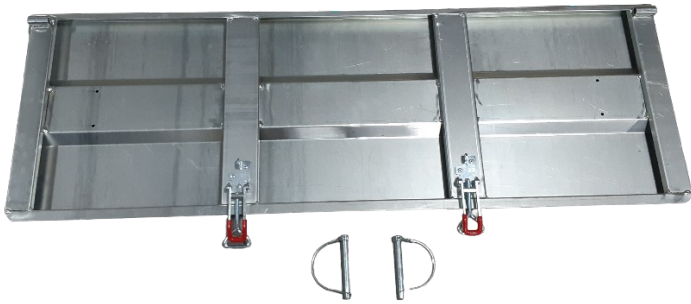


Next, the posts for the tailgate.





Now install the tailgate and secure it with the locking pins.

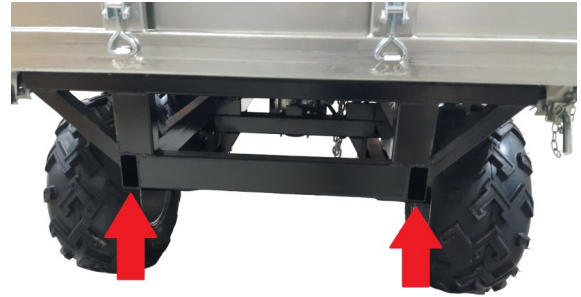


Install the 4 height extensions.





4 plastic end caps are pressed into the ends of the frame.

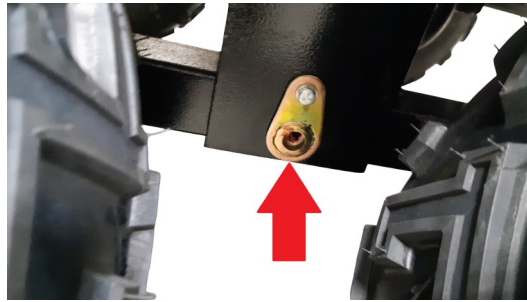


Install the reflectors.





Lubricate the axle bolts.



To tilt the trailer in the desired direction, remove the 2 locking pins on the opposite side.



